

FELKER PIPING PRODUCTS

A DIVISION OF FELKER BROTHERS CORPORATION



Over 100 Years of Excellence
Est. 1903

"Your Complete Combination in Stainless Steel Piping Products"

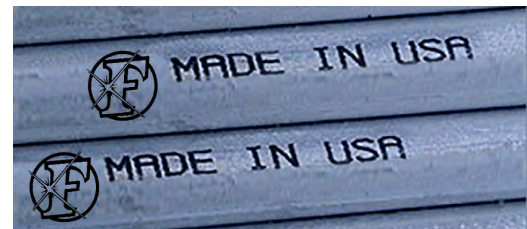
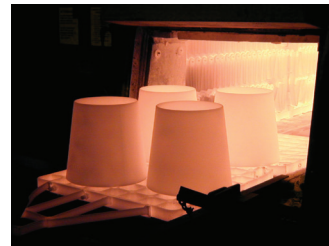
NEW PRODUCTS AVAILABLE

- 5" Sch10S and Sch40S Pipe
- 14"-24" Sch40S A-312 Pipe
- Roll Grooved Pipe
 - 2"-12" Sch5S, Sch10S, Sch40S OGS Groove
 - 14"-24" Sch5S, Sch10S, Sch40S AGS Groove



- Heavy Wall (1/2" and 5/8" Thick) Pipe and Fittings A-778/A-774
- 6" NPS and Smaller Cast Angle Rings

- Up to 36" Sch40S A-403 WPW Reducers



ASK ABOUT OUR FAST TRACK FITTING PROGRAM!!

For a complete listing of products, please see our catalog at www.felkerbrothers.com.

Corporate Sales Contacts

Chris Golden	715-486-2129	cgolden@felkerbrothers.com	Randy Krogman	715-486-2127	rkrogman@felkerbrothers.com
Jesse Rabehl	715-486-1219	jrabehl@felkerbrothers.com	Tracy Sischo	715-486-2137	tsischo@felkerbrothers.com
Marci Spindler	715-486-2136	mospindler@felkerbrothers.com	Katie Adams	715-486-1222	kadams@felkerbrothers.com
			Tammy Beil	715-486-2135	tbeil@felkerbrothers.com

FELKER PIPING PRODUCTS

A DIVISION OF FELKER BROTHERS CORPORATION



- ASTM/ASME A/SA-312
- ASTM A-778
- ANSI/AWWA C-220
- ASTM/ASME A/SA-358
- NACE MRO 103 & 175

PIPE SCHEDULES AND WEIGHTS

THICKNESSES MANUFACTURED BY FELKER BROS. ARE HIGHLIGHTED

SCHEDULE		5S		10S		40S		10		20		30		40		STD	
Dia. (NOM.)	OD	inches	mm	inches	mm	inches	mm	inches	mm	inches	mm	inches	mm	inches	mm	inches	mm
OD	mm	lbs/ft	kg/m	lbs/ft	kg/m	lbs/ft	kg/m	lbs/ft	kg/m	lbs/ft	kg/m	lbs/ft	kg/m	lbs/ft	kg/m	lbs/ft	kg/m
2"	51	0.065	1.650	0.109	2.770	0.154	3.910					0.125	3.170	0.154	3.910	0.154	3.910
2.375	60	1.62	2.40	2.66	3.95	3.69	5.48					3.03	4.49	3.69	5.47	3.69	5.47
2 1/2"	64	0.083	2.100	0.120	3.050	0.203	5.160					0.188	4.770	0.203	5.150	0.203	5.150
2.875	73	2.50	3.71	3.56	5.28	5.85	8.68					5.45	8.09	5.85	8.68	5.85	8.68
3"	75	0.083	2.100	0.120	3.050	0.216	5.490					0.188	4.770	0.216	5.490	0.216	5.490
3.500	89	3.06	4.54	4.37	6.48	7.65	11.36					6.71	9.96	7.65	11.36	7.65	11.36
3 1/2"	89	0.083	2.100	0.120	3.050	0.226	5.740					0.188	4.770	0.226	5.740	0.226	5.740
4.000	102	3.50	5.19	5.02	7.45	9.19	13.64					7.73	16.88	9.19	13.64	9.19	13.64
4"	100	0.083	2.100	0.120	3.050	0.237	6.020					0.188	4.770	0.237	6.020	0.237	6.020
4.500	114	3.95	5.86	5.67	8.42	10.89	16.17					8.74	12.97	10.89	16.17	10.89	16.17
5"	125	0.109	2.770	0.134	3.400	0.258	6.550							0.258	6.550	0.258	6.550
5.563	141	6.41	9.51	7.84	11.64	14.75	21.90							14.75	21.90	14.75	21.90
6"	150	0.109	2.770	0.134	3.400	0.280	7.110							0.280	7.110	0.280	7.110
6.625	168	7.66	11.37	9.38	13.92	19.15	28.43							19.15	28.43	19.15	28.43
8"	200	0.109	2.770	0.148	3.760	0.322	8.180			0.250	6.350	0.277	7.030	0.322	8.180	0.322	8.180
8.625	219	10.01	14.86	13.52	20.07	28.82	42.79			22.57	33.51	24.93	37.02	28.82	42.79	28.82	42.79
10"	250	0.134	3.400	0.165	4.190	0.365	9.270			0.250	6.350	0.307	7.790	0.365	9.270	0.365	9.270
10.750	273	15.34	22.77	18.83	27.96	40.86	60.67			28.30	42.02	34.56	51.32	40.86	60.67	40.86	60.67
12"	300	0.156	3.960	0.180	4.570	0.375	9.530			0.250	6.350	0.330	8.380	0.406	10.310	0.375	9.530
12.750	324	21.18	31.45	24.39	36.21	50.03	74.29			33.69	50.02	44.18	65.60	54.03	80.23	50.03	74.29
14"	350	0.156	3.960	0.188	4.770	*	*	0.250	6.350	0.312	7.920	*	*	0.438	11.120	0.375	9.525
14.000	356	23.28	34.57	27.99	41.56			37.06	55.03	46.04	69.36			64.03	95.08	55.08	81.79
16"	400	0.165	4.190	0.188	4.770	*	*	0.250	6.350	0.312	7.920	*	*	0.500	12.700	0.375	9.525
16.000	406	28.17	41.83	32.05	47.59			42.45	63.03	52.76	78.34			83.55	124.07	63.16	93.79
18"	450	0.165	4.190	0.188	4.770	*	*	0.250	6.350	0.312	7.920	0.438	11.120	0.562	14.270	0.375	9.525
18.000	457	31.72	47.10	36.10	53.60			47.84	71.04	59.49	88.34	82.92	123.13	105.65	156.89	71.25	105.80
20"	500	0.188	4.770	0.218	5.540	*	*	0.250	6.350	0.375	9.525	0.500	12.700	0.594	15.080	0.375	9.525
20.000	508	40.15	59.62	46.49	69.03			53.23	79.04	79.33	117.80	105.11	156.08	124.26	184.52	79.33	117.80
24"	600	0.218	5.540	0.250	6.350	*	*	0.250	6.350	0.375	9.525	0.562	14.270	0.688	17.470	0.375	9.525
24.000	611	55.89	82.99	64.01	95.05			64.01	95.05	95.50	141.81	142.00	210.87	172.90	256.75	95.50	141.81
30"	750	0.250	6.350	0.312	7.920	*	*	0.312	7.920	0.500	12.700	0.625	15.870			0.375	9.525
30.000	762	80.18	119.60	99.85	148.27			99.85	148.27	159.01	236.12	197.91	293.89			119.76	177.84
36"	900							0.312	7.920	0.500	12.700	0.625	15.870	0.750	19.050	0.375	9.525
36.000	914							120.03	178.24	189.57	284.15	236.13	353.93	285.00	423.22	144.01	213.85

- 21' lengths STD Up to 50' lengths available
- 20' lengths
- 20' lengths 1 CIRC Weld
- Lengths to be identified on quote
- *SEE STD WALL

OTHER PIPE SIZES AND WALLS PRODUCED

WALL THK (in/mm)		0.188/4.770		0.250/6.350		0.312/7.920		0.375/9.525		0.500/12.700		0.625/15.875	
Dia. (NOM.)	OD	inches	mm	inches	mm	inches	mm	inches	mm	inches	mm	inches	mm
OD	mm	lbs/ft	kg/m	lbs/ft	kg/m	lbs/ft	kg/m	lbs/ft	kg/m	lbs/ft	kg/m	lbs/ft	kg/m
26"	650	0.188	4.770	0.250	6.350	0.312	7.920	0.375	9.525	0.500	12.700	0.625	15.875
26.000	660	52.310	77.680	69.390	103.040	86.390	128.280	105.105	156.410	137.440	204.090	187.720	278.760
28"	700	0.188	4.770	0.250	6.350	0.312	7.920	0.375	9.525	0.500	12.700	0.625	15.875
28.000	711	56.360	83.690	74.780	111.040	93.120	138.280	113.190	168.450	148.220	220.100	202.560	300.800
30"	750	0.188	4.770	0.250	6.350	0.312	7.920	0.375	9.525	0.500	12.700	0.625	15.875
30.000	762	60.410	89.700	80.180	119.600	99.850	148.270	119.760	178.220	159.010	236.120	217.390	322.820
32"	800	0.188	4.770	0.250	6.350	0.312	7.920	0.375	9.525	0.500	12.700	0.625	15.875
32.000	812	64.470	95.730	85.860	127.500	106.570	158.250	127.635	189.940	169.780	252.120	232.220	344.840
36"	900	0.188	4.770	0.250	6.350	0.312	7.920	0.375	9.525	0.500	12.700	0.625	15.875
36.000	914	72.570	107.760	96.340	143.060	120.030	178.240	189.570	252.110	191.350	284.150	261.890	388.900
38"-44"	960-1110	0.188	4.770	0.250	6.350	0.312	7.920	0.375	9.525	0.500	12.700	0.625	15.875
38.00-44.00	965-1117												
48"-96"	1210-2430	0.188	4.770	0.250	6.350	0.312	7.920	0.375	9.525	0.500	12.700	0.625	15.875
48.00-96.00	1219-2438												

Nominal Pipe Weight (lb/ft) = (OD - wall) x wall x 10.78

OTHER DIAMETERS AVAILABLE UPON REQUEST
LENGTHS TO BE IDENTIFIED ON QUOTE

Certifications

Felker Brothers Corporation is proud to have achieved certification in each of the following:

- PED Material Manufacturer EN 10204 3.1
- NSF/ANSI Standard 61 - Drinking Water System Components
- NSF/ANSI Standard 372 - Drinking Water System Components - Lead Content
- ISO 9001:2008